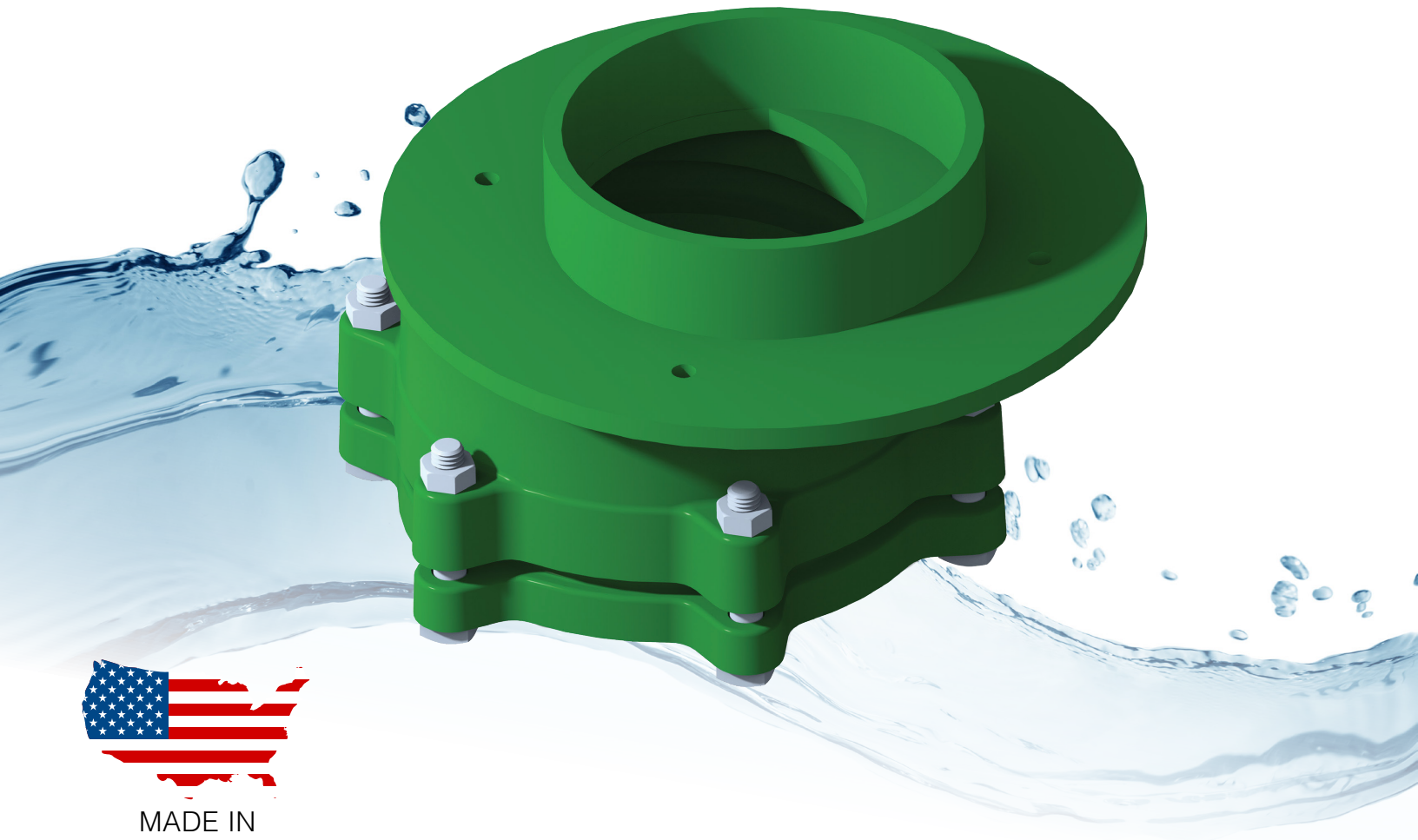


# OFFSET HAND PUMP FLANGE

## 550SMP | 660SMP



MADE IN  
THE USA

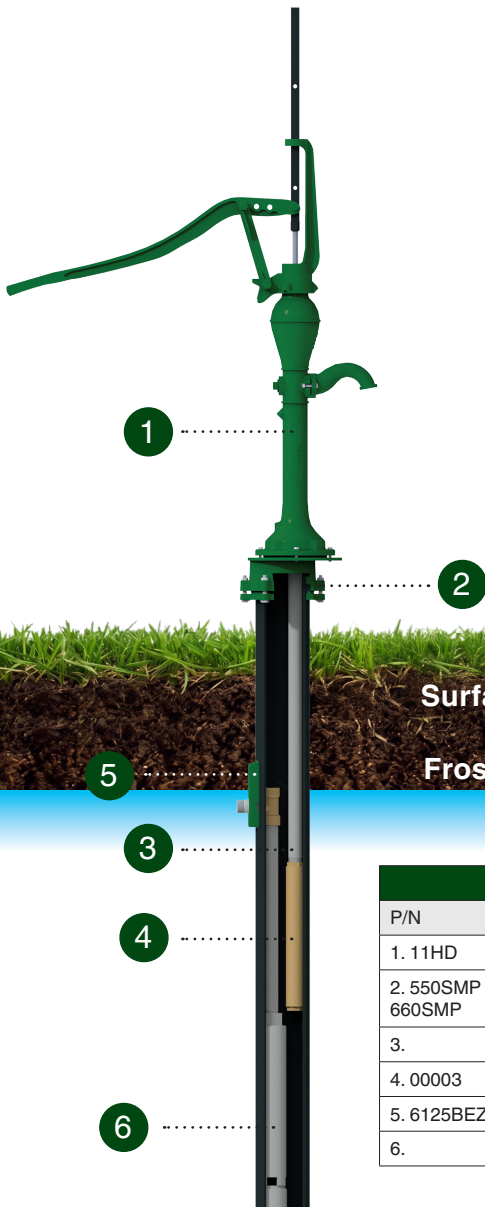


# THE MONITOR® OFFSET HAND PUMP FLANGE

Monitor® is proud to unveil a **NEW** innovative product to our portfolio of hand pumps. The Offset Hand Pump Flange provides homeowners the ability to incorporate both a submersible pump and hand pump cylinder within a single five or six inch well. The offset allows the brass cylinder to bypass the pitless adapter and set above the 4" submersible well pump. The design incorporates a watertight well case seal, utilizing the Monitor® Kwikonect technology, protecting the well from surface water contamination.

## Features/Benefits

- The Monitor® Hand Pump serves as a manual backup in the event the submersible pump is unable to operate
- Never go without water during the next power outage
- Save thousands of \$\$\$ by avoiding a secondary well for the hand pump
- Design is compatible with both 1" + 1.25" Monitor® Pitless adapters
- Designed, cast, and fabricated in the USA – Evansville, WI
- Made with heavy duty Ductile Iron & Steel
- Compatible with Monitor® "HD" Force & Drinking Fountain Pumps
- Avoid a costly generator that requires fuel storage; leading to "bad fuel" that prevents operation



Surface Line

Frost Line



PARTS BREAKDOWN	
P/N	Description
1. 11HD	Force Hand Pump
2. 550SMP   660SMP	5" or 6" Offset Hand Pump Flange 1-1/4" Drop Pipe & Pump Rod
3.	2" Brass Cylinder
4. 00003	
5. 6125BEZLF	1-1/4" Weld-On Adapter
6.	4" Submersible Pump

COMPATIBLE PITLESS ADAPTERS			
BEZ Pitless Adapters		Brass Slide Type Pitless Adapters	
Clamp-On	Weld-On	1"	1.25"
61CBEZLF	6123BEZLF	1BTLF	125BTLF
6125CBEZLF	6125BEZLF	1BTBLF	
	6125BEZLF	100BTLF	
	6125BEZLF	1BPTLF	
		100BPTLF	

