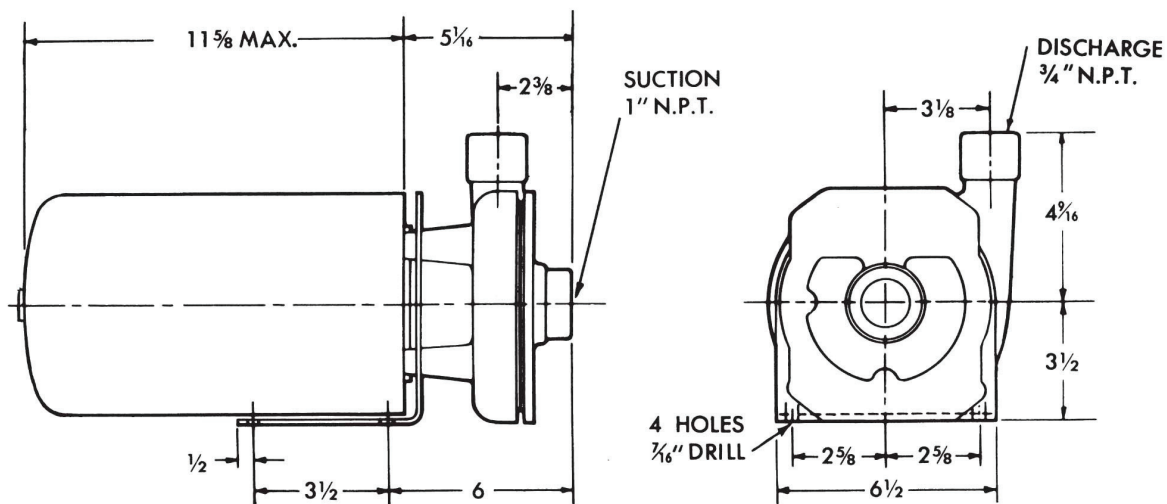




MODEL HKC2 1 x 3/4
Nickel Aluminum Bronze

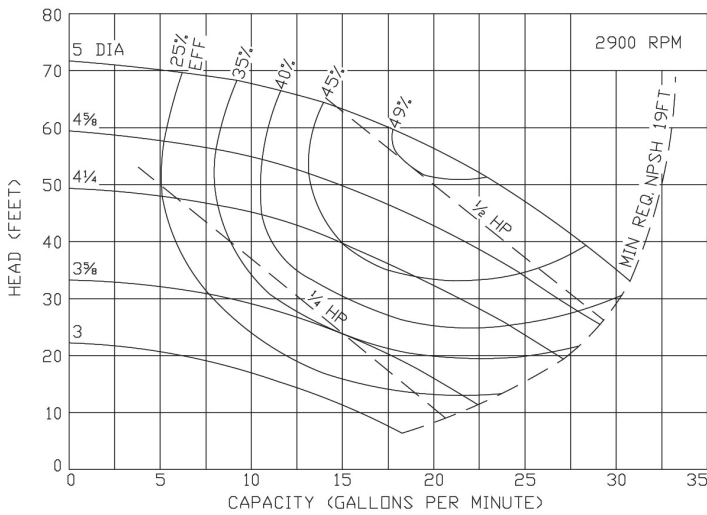
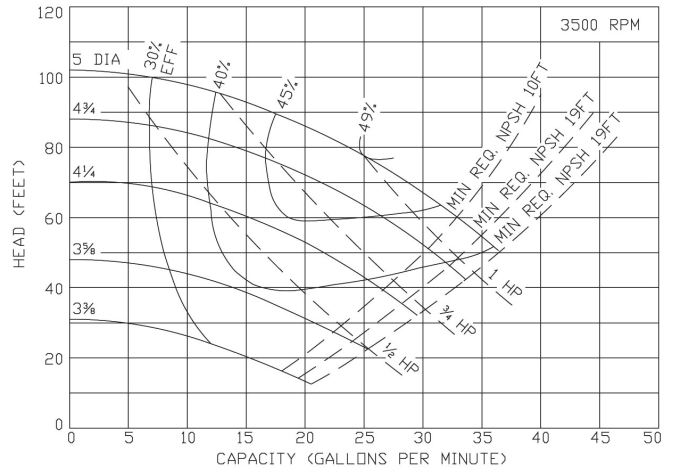


HP	FRAME	APPROX. WEIGHT (LBS)
1/2	56J	46
3/4	56J	48
1	56J	52
2	56J	61

MATERIAL SPECIFICATIONS

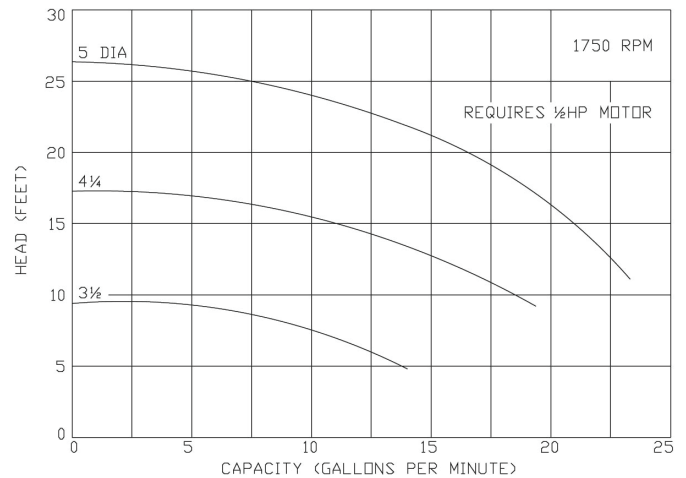
PART NAME	NICKEL ALUMINUM BRONZE
Casing	AMPCO® 483
Cover	AMPCO® 483
Impeller	AMPCO® 483
Bracket	Steel

Curves show approximate characteristics based on clear 68° water. Rated point is guaranteed



Standard HK Series pumps have threaded NPT connections.

Seal options include Type 21 and Type 9 with choice of sealing materials.



For more information contact:
 Haight Pumps 133 Enterprise Street • Evansville, WI 53536 Phone: 800-871-9250 • Fax: 608-882-3777
 Website: haightpump.com